

INALA



Experience the natural beauty, tranquillity and diversity of this special part of Australia.

Our boutique travel agency also specializes in designing personalized tours throughout Tasmania and other areas of Australia.

ABOUT INALA

Background on Business

INALA-Bruny Island Pty. Ltd. (trading as INALA Nature Tours) is a family owned and operated company that specializes in designing and organizing personalized wildlife tours for groups such as birdwatchers and nature enthusiasts. Emphasis is placed on providing an ecologically friendly and educational experience of a high standard, using specialist guides with a high level of knowledge who have the ability to present the information in an interesting manner.

Priority is placed on maximizing the clients' tour experience. Itineraries are mostly designed for Tasmanian tours, but we are increasingly asked to book facilities for specialist tours to other areas of Australia, and have developed a wide network of reliable operators of an excellent standard, both throughout Tasmania and other Australian destinations.

The headquarters of the company is based at "INALA", a "Land for Wildlife" property on Bruny Island, south of Hobart. The business has been operating since 1994. Prior to this Dr Tonia Cochran, the founder of the company, worked as a professional biologist on a wide range of projects on Australian fauna and flora.

There are three main facets to the business:

1. A licensed travel agency which specializes in designing and organizing personalized tours; Requirements for travel bookings vary from organizing accommodation-only stays and perhaps a hire car for those clients wishing to "do their own thing", to arranging and booking an all-inclusive tour that is personally designed for each client.

We can make bookings for hire vehicles throughout Australia at competitive rates. We can also offer a "multi-hire rental" for people who require rental vehicles in several different parts of Australia, and the longer cumulative rental period is available at discounted daily rates.

2. Guided nature tours of Bruny Island and other destinations around Tasmania; INALA Nature Tours offers personalized guided tours of Bruny Island and other destinations around Tasmania. Tours operate on demand for group sizes ranging from single individuals to groups of 20+ passengers traveling in a luxury coach. A selection of tours ranging from half day to three days duration (including night excursions) are offered on Bruny Island; personalized tours around Tasmania range from approximately three - fifteen days or longer, and are designed according to each individual group's requirements and interests, and to maximize their experience.

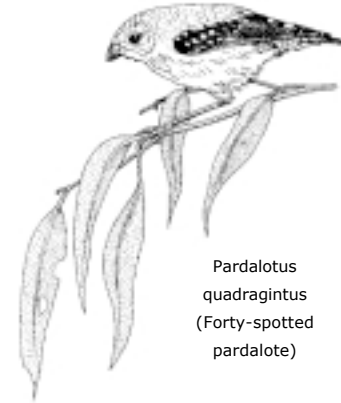
3. Cottage accommodation in a 3-bedroom cottage located on "INALA" on Bruny Island. INALA Country Accommodation is a 3-bedroom cottage located on 500 acres of land near the South Bruny National Park. It combines modern conveniences such as TV, video, microwave, washing machine, clothes dryer and electric blankets with old- world charm (slow combustion woodheater and log fire in a cottage nestled in tall eucalypt forest at the foot of the South Bruny Ranges). Although set up for self-catering, meals can also be arranged on request for clients. This cottage is often used as a base for Bruny Island tours of smaller group size.

Nature Tours of Bruny Island, Tasmania

Bookings and enquiries:

Dr. Tonia Cochran
"INALA"
320 Cloudy Bay Road, BRUNY ISLAND
TASMANIA, AUSTRALIA 7150

Phone: +61-3-6293-1217
Fax: +61-3-6293-1082
Mobile: +61-418-124-934
Email: inala@inalabruny.com.au
Website: www.inalabruny.com.au



Pardalotus quadragintus (Forty-spotted pardalote)

INALA TOURS

Tours of Bruny Island

- * Half-Day Tours of Bruny
- * Day Tour of Bruny
- * Evening Tours
- * Two and Three Day Tours

Tours of Tasmania

- * South and eastern Tassie
- * North to south
- * North to south via east coast
- * Explore the west



Thylogale billiardieri (Tasmanian pademelon)

For details on the above tours please visit the INALA website at www.inalabruny.com.au or contact INALA directly to customize a tour of Tasmania or any other part of Australia that will suit your particular needs.

CONDITIONS FOR TOURS AND ACCOMMODATION...

We offer a personalised service for our clients, who often make reservations with us well in advance. Cancellations with short notice (of even 2 months or more) are sometimes hard to re-book because of the long lead time most clients require to secure reservations. Therefore, we recommend that you consider the option of travel insurance when booking your trip, to cover you for any financial losses incurred for cancellation due to unforeseen circumstances. A deposit of 25% of the cost of the tour/accommodation is payable at the time of booking, with the balance to be paid 14 days prior to commencement of your visit. Cancellation must be made in writing, either by email, fax or letter. A fee of 25% of the cost of the tour/accommodation will be charged for cancellations of more than 14 days' notice, and no refunds will be made for cancellations made within 14 days of commencement of your stay. NO PETS ALLOWED for the sake of the wildlife on the property.

Tour Itineraries may change slightly (or a comparable alternative offered) if weather conditions are unfavourable, but every effort will be made to make your tour a successful and enjoyable one. Sights will also vary according to the season and weather conditions.

For tours on Bruny Island: due to the restrictions placed on travel to and from the island by the ferry service, nocturnal tours are only available if you have arranged to stay on Bruny overnight. Groups with their own transport may also participate in some activities, where a designated rendezvous place will be nominated. Tours are available all year round on demand, although prior booking is necessary.

Please advise of any special health or dietary requirements that you may have at the time of booking. We have a no smoking policy in our accommodation cottages, and a smoke-free environment is encouraged for the comfort of others.

Caleana major (Flying duck orchid)



Caladenia carnea (Pink fingers)